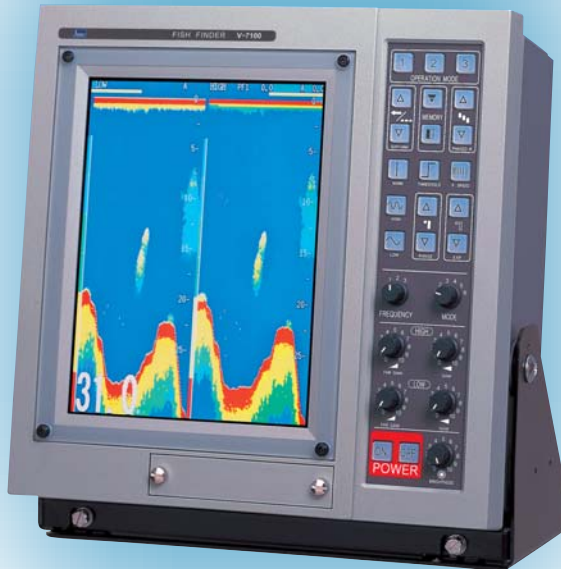


Model V-7100



Featuring:

Dual-frequency professional echo sounder equipped with a 10.4" VGA LCD screen.

6 sets of operational parameters for instant recall of optimum settings, eliminating the need to make settings every time the fishing ground or type of fishing is changed.

7 freely definable depth ranges to set the desired upper/lower limits on each range.

Far gain control to allow echoes from deeper areas to be emphasized for ease of fish finding at greater depths.

4 modes of bottom-locked expansion to easily discriminate bottom-feeding fish from the seabed contour or to survey the nature of bottom in greater detail.

Higher-than-normal sounding rates selectable for enhanced fish detection when traveling at high speeds or when searching for fast-moving targets.

Up to 32 definable colors together with a wide selection of dynamic ranges, displaying echogram for unsurpassed capability to assess fish type, population and distribution or to help analyze the bottom stratum in surveying applications.

Specifications

- **Display:** 10.4-inch TFT LCD with VGA resolution
- **Echogram Colors:** 8, 16 and 32
- **Frequency:** 2 selectable from 28, 50, and 200 kHz. 38 kHz option
- **Ranges:** 7 user-customizable ranges to 3,000 m/ft/m/br or to 6000 ft
- ***Digital Data I/O Interface:** NMEA-0183
- **Analog Interface:** Trigger (proprietary level), *temperature sensor
- **Power Requirements:** 10.5 to 40 VDC, approx. 30W
- **Weight:** Approx. 9 kg with mounting bracket
- **Size:** 329W × 342H × 150D (mounting bracket attached)
- **Environment:** IEC 60945-2002 (protected category)

*option