

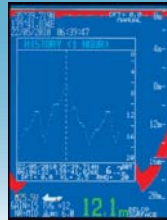
Model F-1000



Typical Displays



Bottom Contour



Soundings History



Soundings Log

Featuring:

IMO resolution-compliant low-cost single-frequency navigation sounder housed in electrostatically-shielded compact ABS plastic cabinet.

Certified to comply with EU Marine Equipment Directive (MED) and other relevant international standards for wheel mark certification.

7-analog color echogram across 5.7-inch LED-backlit daylight-readable LCD screen.

Fully automatic operation, tracking bottom contour with appropriate range, receiver gain and TVG settings. Manual override possible.

Stores up to 12 hours of sounding history for off-line applications, together with date, time stamping and with position coordinates (optional GPS sensor required).

Externally acknowledgeable navigational and failure alarms by software commands.

Password protection to prevent unauthorized changes to important operational settings.

Optional monochrome graphic printer available for simulated paper-recording type sounder operation.

Specifications

- **Transducer Frequencies:** 50 or 200 kHz (to be user-specified)
- **Screen:** 5.7" LED-backlit LCD, daylight-viewing, QVGA resolution
- **Depth Ranges:** 5 to 1000m in 8-range steps, automatic or manual selection
- **Transmit Power:** Approx. 600W RMS with automatic or manual power reduction
- **Data Storage:** Up to 12 hours
- **Interfaces:** 2XRS-422 ports. 8-pin I/O data port (NMEA-0183/RS-232C)
- **Option:** Stationary thermal-head graphic printer **PR-950G**
- **Power Requirements:** 11 to 40 VDC, approx. 12W
- **Size:** Approx. 248W/196×218H/196×102D mm with/without mounting bracket
- **Cabinet Weight:** Approx. 1.2 kg (with mounting bracket)
- **Environment:** Compliant with IEC 60945-2002 (protected category)