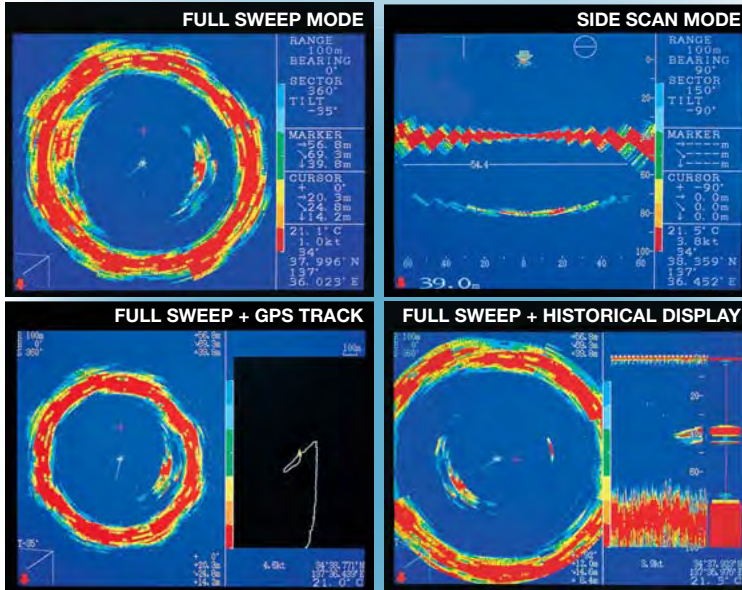


Models CSL-1000 and CSL-2000



Featuring:

Searchlight-type sonar system consisting of hull and control units with VGA output

MM-15 marine monitor is optionally available. Low-cost PC display may also be used.

Color palette function offers 4096 colors to choose from for displaying echoes.

Full sweep, sector sweep, off-centered sweep, side scan and echo sounder modes

Built-in transducer stabilizer compensating for rolls and pitches

NMEA-0183 interface for GPS sensor for displaying track alongside sonar screen

Specifications

- **Frequency:** 80 kHz (CSL-1000-80), 180 kHz (CSL-1000-180), 80 kHz (CSL-2000-80)
- **Transmit Power (RMS):** 1.5 kW
- **Signal Output Format:** VGA (640X480 pixels)
- **Seachest Diameter:** 6"/146 mm (CSL-1000), 8"/190 mm (CSL-2000)
- **Hoist Pipe Length (standard):** 1681 mm (CSL-1000), 1350 mm (CSL-2000)
- **Soundome Travel:** 200-400 mm
- **Range:** 20-2000m, 12-1600 fthm, 80-6000 ft
- **Training Rate/360°:** 4.3 sec./20m range - 12.8 sec./200m range
- **Scan Sector Steps:** 5° and 10° (sonar mode), 3° and 5° (side scan mode)
- **Power Requirements:** 20-30 VDC, 60W (hull unit), 11-40 VDC, 9W (control unit)
- **Weight:** 44.9 kg (hull unit), 3.2 kg (control unit)
- **Size:** 296W×100H×200D mm (control unit)