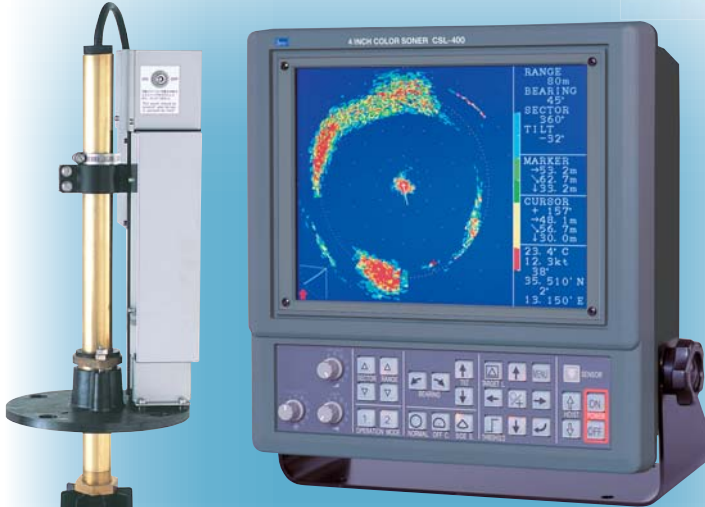
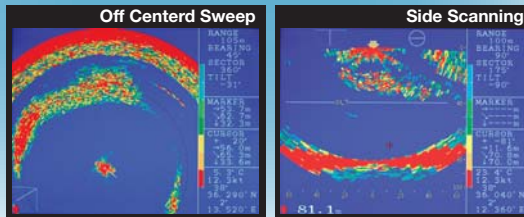


Model CSL-400-200



CSL-400-200
HULL UNIT



Featuring:

Low cost 200 kHz searchlight sonar system consisting of hull and display console

10-inch daylight-viewing TFT color LCD screen

Newly designed 4" hull unit allows installation of full function sonar in small vessels

Color palette function offers 4096 colors to choose from for displaying echoes

Full sweep, sector sweep, off-centered sweep, side scan and echo sounder modes

Up to 4 sets of often-used control parameters can be stored for instant recall of suitable operating mode for fishing ground or type of fishing.

Built-in transducer stabilizer compensating for rolls and pitches

NMEA-0183 interface for GPS sensor to show position, heading or to retract soundome automatically

Specifications

- **Frequency:** 200 kHz
- **Transmit Power (RMS):** 800W
- **Seachest Diameter:** 4"/101 mm
- **Hoist Pipe Length:** 1240 mm
- **Soundome Travel:** 120-200 mm
- **Range:** 10-300m, 10-200 fthm, 50-1000 ft
- **Training Rate/360°:** 4.2 sec./10m range - 32 sec./300m range
- **Scan Sector Steps:** 5° and 10° (sonar mode), 3° and 5° (side scan mode)
- **Power Requirements:** 24 VDC, 70W (Hull Unit+Display)
- **Weight:** 17 kg (Hull Unit), 6 kg (Display)
- **Size (Display):** 305/288W × 322/296H × 130D mm with/without bracket