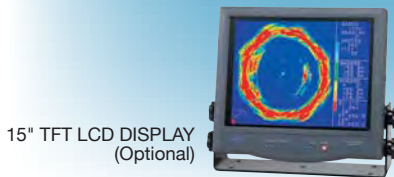
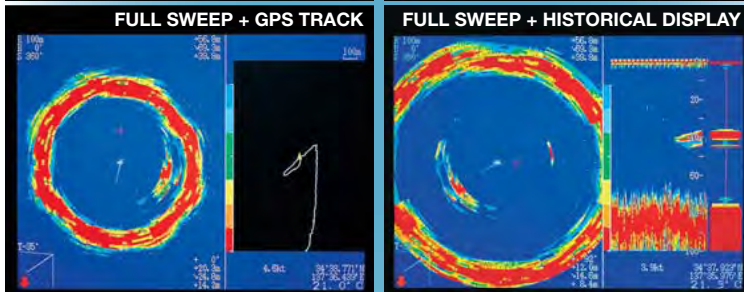
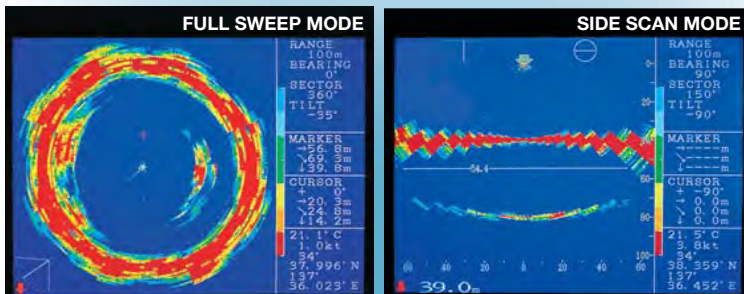


Model CSS-3000



15" TFT LCD DISPLAY
(Optional)



CONTROL UNIT



HULL UNIT
CSL-3000-150

Featuring:

Sector scan sonar system consisting of hull and control units with VGA output

MM-15 marine monitor is optionally available. Low-cost PC display may also be used.

Color palette function offers 4096 colors to choose from for displaying echoes.

Full sweep, sector sweep, off-centered sweep, side scan and echo sounder modes

Built-in transducer stabilizer compensating for rolls and pitches

NMEA-0183 interface for GPS sensor for displaying track alongside sonar screen

Specifications

- **Frequency:** 80 kHz (CSS-3000-80), 150 kHz (CSS-3000-150)
- **Transmit Power (RMS):** 1.2 kW (80 kHz), 1 kW (150 kHz)
- **Signal Output Format:** VGA (640×480 pixels)
- **Seachest Diameter:** 8"/190 mm
- **Hoist Pipe Length (standard):** 1350 mm
- **Soundome Travel:** 200-400 mm
- **Range:** 40-2000m, 20-1600 fthm, 120-6000 ft
- **Training Rate/360°:** 3 sec./40m range - 6 sec./320m range
- **Scan Sector Steps:** 45° (sonar mode), 6° and 12° (side scan mode)
- **Power Requirements:** 20-30 VDC, 110W (hull unit), 11-40 VDC, 9W (control unit)
- **Weight:** 60.1 kg (hull unit), 3.2 kg (control unit)
- **Size:** 296W×100H×200D mm (control unit)