

Ti250

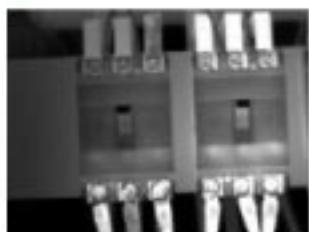
Thermo Blend

IRtek
No Touch Thermal Solution

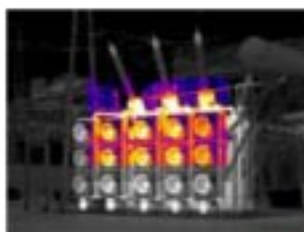


FEATURES

- Auto Focus
- 2.0 Megapixel CMOS
- Large Storage Capacity
- Rugged and Ergonomical Design
- Friendly Interface for Convenient Use
- IR Fusion Technology
- Flexible Battery Compatibility
- Low Cost
- High Performance



VISUAL IMAGE



IR FUSION



THERMAL IMAGE



Ti250 Thermo Blend SPECIFICATIONS

IMAGING PERFORMANCE (THERMAL)	
Detector	Uncooled FPA Microbolometer (160x120 pixels, 25µm)
Spectral range	8 ~ 14µm
Thermal sensitivity	±0.1°C at 30°C
Field of view	20.6° x 15.5°
Lens	11mm
Focus	Automatic or motorized
Image frame rate	50/60Hz
Electronic zoom	-
IMAGING PERFORMANCE (VISUAL)	
Built-in digital camera	CMOS sensor (1600x1200 pixels, 2 ⁴ true colors)
IMAGE PRESENTATION	
External display	3.6" TFT LCD with high resolution (840x480 pixels)
Video output	50Hz PAL / 60Hz NTSC
Infra fusion	visual and IR blending
MEASUREMENT	
Temperature range	-20 ~ 250°C (-4 ~ 482°F)
Optional temperature	up to 350°C (662°F) / 1200°C (2192°F)
Accuracy	±2°C or ±2% of reading
Measurement modes	Auto hot spot tracing, center cursor temperature measurement pinpoint the problem
Display color	8 palettes available
Temperature unit	°C or °F selectable
Emissivity correction	Variable from 0.01 to 1.00 by 0.01 increment
Measurement features	Automatic correction based on data input of distance, humidity, and ambient temperature
Optical transmission correction	Automatic temperature correction based on different lens fitted
IMAGE STORAGE	
Type	Removable 2GB SD card or built-in flash memory
File format	JPG with analysis record
Image storage	±200 images (built-in flash memory), ±2000 images (2GB SD card)
Voice annotation	Up to 50 seconds per file
LIVE VIDEO RECORDING	
Recording	Thermal video recording to PC via USB2.0
Storage	In PC (capacity dependent on PC harddisk capacity)
INTERFACES	
Communication	USB2.0 (thermal & visual real-time image, measurement, and voice transfer to PC; live video transfer to PC)
Buttons	Respond as per operator's operation
Menu	Microsoft® Windows style
LASER LOCATOR	
Classification type	Class 2, semiconductor diode laser : 1mW/635nm
POWER SYSTEM	
Battery type	AA rechargeable battery, field-replaceable, AA alkaline battery also useable
Battery operating time	Over 3 hours continuous operation
Charging system	In camera or in battery charger
Charger	100 ~ 240 V AC, 50/60Hz
External power	AC adapter 110/220V AC, 50/60Hz
ENVIRONMENTAL	
Operating temperature	-10 ~ 50°C (14 ~ 122°F)
Storage temperature	-20 ~ 60°C (-4 ~ 140°F)
Operating humidity	10 ~ 95%, non-condensing
Storage humidity	10 ~ 95%, non-condensing
Encapsulation	IP54 IEC 529 housing
Vibration	Operational : 25G, IEC 68-2-29
Shock	Operational : 2G, IEC 68-2-6
PHYSICAL CHARACTERISTICS	
Size	111 x 124 x 240mm
Weight	0.73kg (including battery)
ACCESSORIES	
Standard Accessories	2GB SD card, card reader, 6 AA rechargeable batteries, USB extension cable, AC adapter & cable, USB driver, IrAnalyser software, instruction manual, warranty card, certificate of product conformance, soft bag, transport case & strap
Options	30mm tele lens, 7mm wide angle lens, extended temperature range, 1200°C high temperature filter, sun shield, tripod mounting, external 8 cells battery charger

IRtek International
P.O. BOX 435 Joondalup
W.A. 6919 Australia

For more information call :
Phone : +61 (8) 92438849
Fax : +61 (8) 94478835
Email : sales@irtek-temp.com
Web access : www.irtek-temp.com

© 2010 IRtek International
All rights reserved
082012802
Specifications subject to change without prior notice.



IRtek
No Touch Thermal Solution

For further information please contact:

Rotomech
AUTOMATION LIMITED

C-401, sarswati, Suchidham, Malad (E), Mumbai - 400097.
Ph.: 0091 22 65706705 / Mob.: 09324942495
Email: info@rotomech.com / rotomech.asia@gmail.com
Web site : www.rotomech.com